



# Student Option Programme

Installation Guide for

SOP Version 2.0

Council and Secondary Section 2

Education Bureau

Date: 8 Mar 2024

# 1. Prerequisites

Recommended Operating System: Microsoft Windows 10 or above

Required Software: Microsoft Office 2016 or above / Access Database Engine 2016

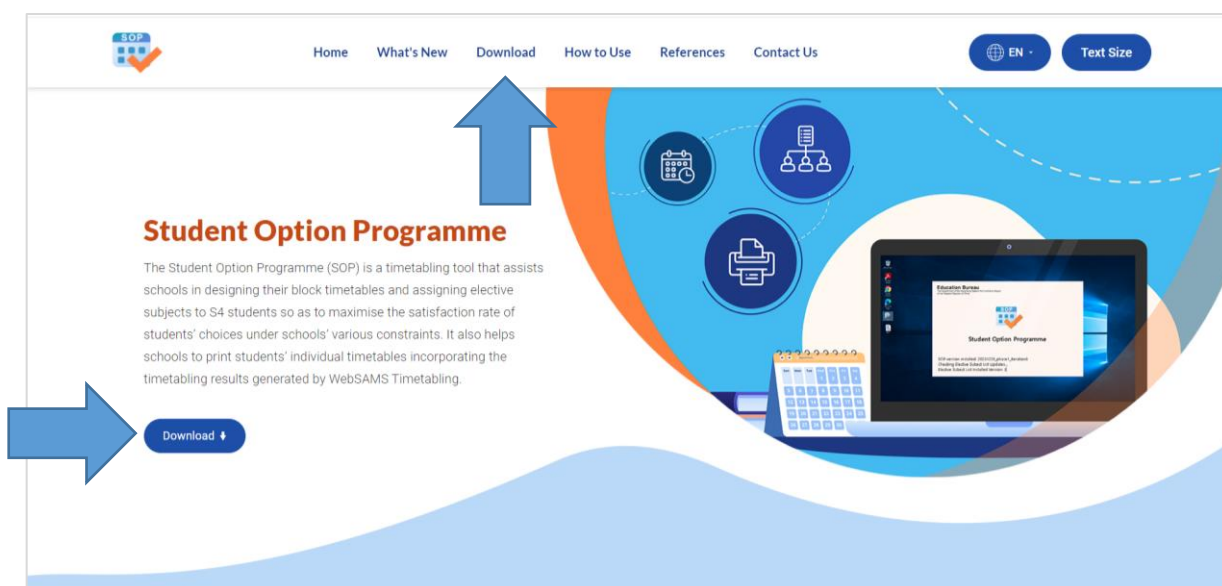
Required Library: Microsoft .NET Core 6.0



The installation process will download and install MS Access Database Engine and/or .NET Core 6.0 automatically if they are not found in your machine.

# 2. Download the Setup File

1. Visit the website of SOP (<https://sop.edb.hkedcity.net>) and then go to the “Download” section.



2. In the “Download” section, click the button “Download (64-bit) ↓” to download the setup file for 64-bit OS or click the hyperlink “Download (32-bit)” to download the setup file for 32-bit OS.

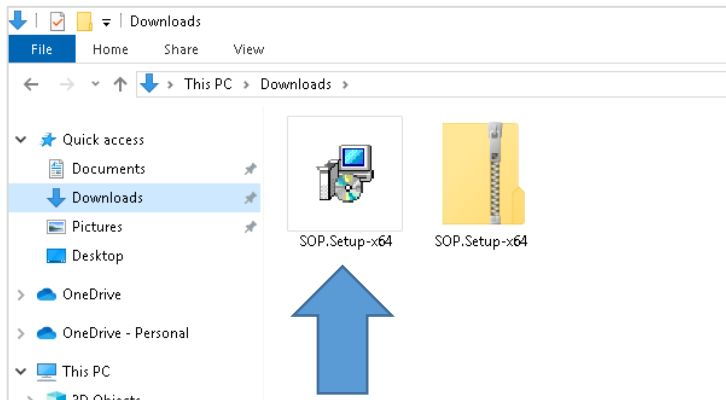
<p><b>Setup File</b></p> <p>Version 2.0 (alpha trial) 8 Mar 2024 Size: max. 27.1MB</p> <p><a href="#">Download (64-bit) ↓</a></p> <p><a href="#">Download (32-bit)</a></p>	<p><b>Release Note</b></p> <ul style="list-style-type: none"> <li>• Added allocation method (by elective subject queue)</li> <li>• Enhanced time block generation</li> <li>• Enhanced calculation of satisfaction rate</li> </ul> <p><a href="#">Detailed release notes</a></p>	<p><b>Prerequisite</b></p> <ul style="list-style-type: none"> <li>• MS Windows 10 or above</li> <li>• MS Office 2016 or above / Access Database Engine 2016</li> <li>• MS .NET Core 6.0</li> </ul>
--	---	--



To allow both SOP version 2.0 and version 1.2.1 co-exist in the same machine, install 32-bit version even in 64-bit OS.

### 3. Install the SOP

1. In the download folder of your machine, unzip “SOP.Setup-x64.zip” (64-bit version) or “SOP.Setup-x86.zip” (32-bit version) and then double-click the executable to start the installation.



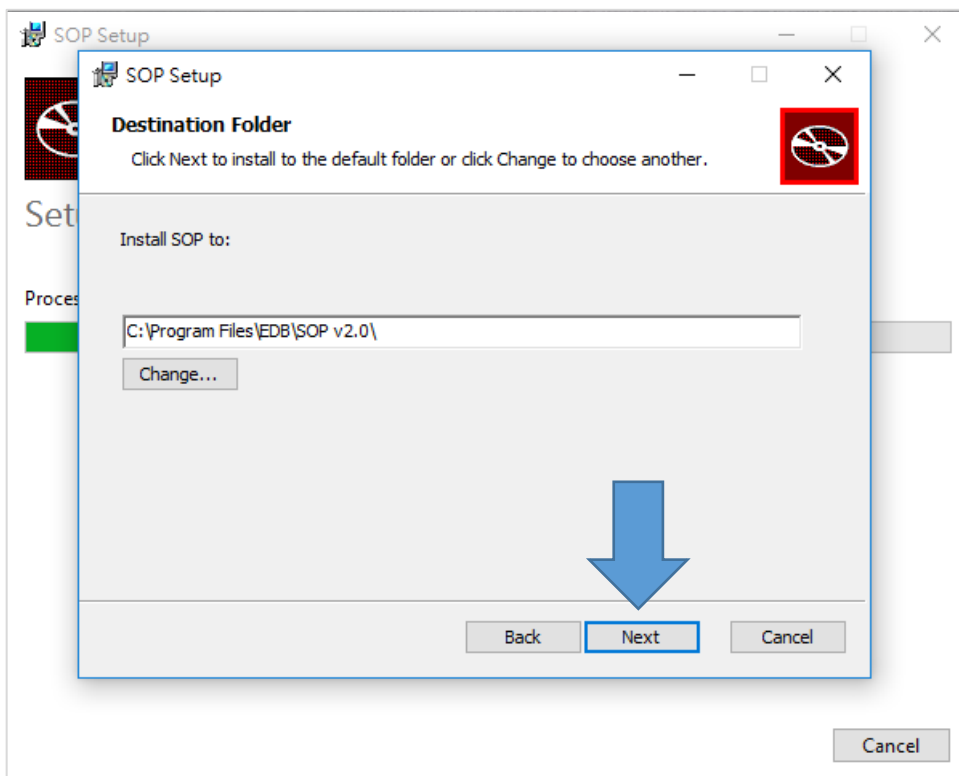
2. Click “Install”.



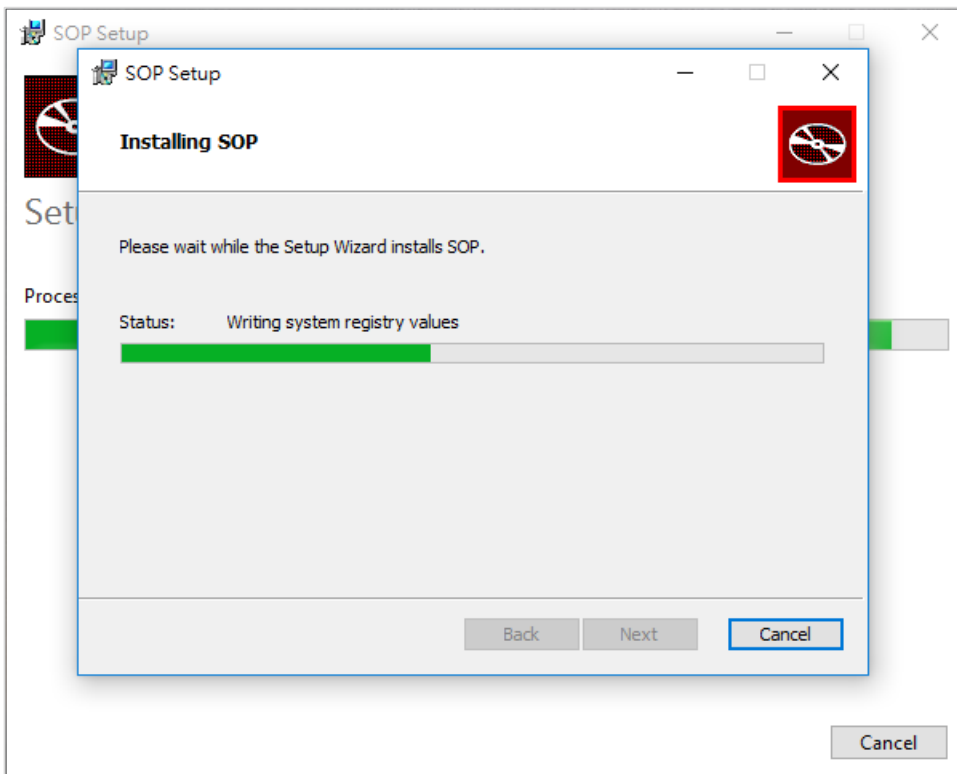
3. Accept the Windows security prompt and then click “Next”.



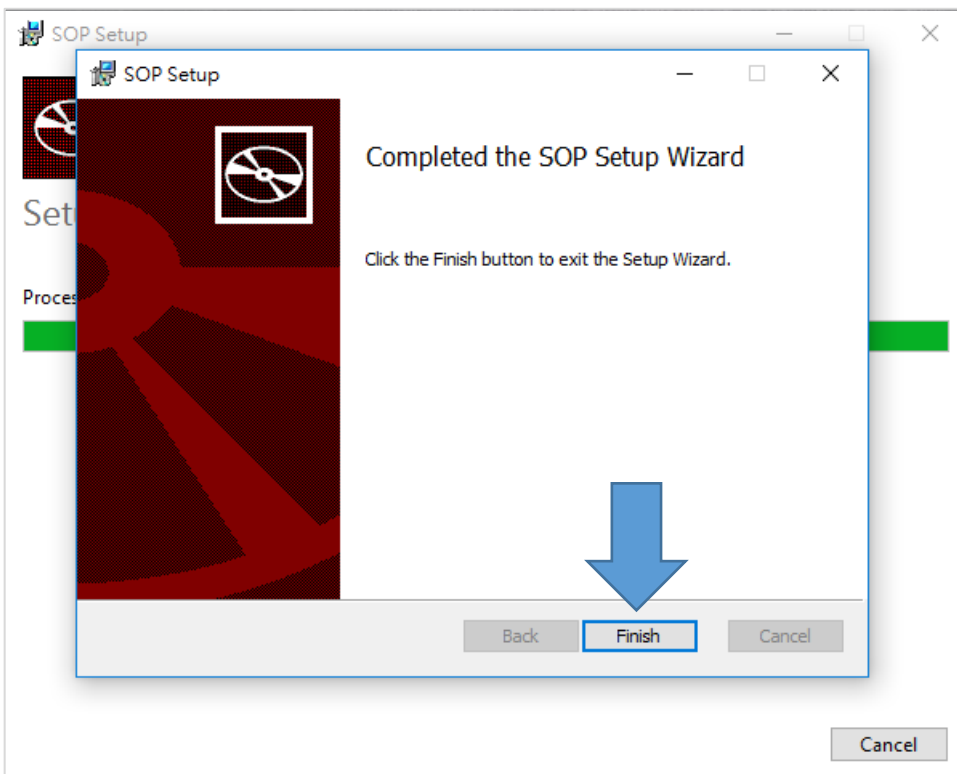
4. Select the installation folder and then click “Next”. It is recommended to keep the installation folder as default.



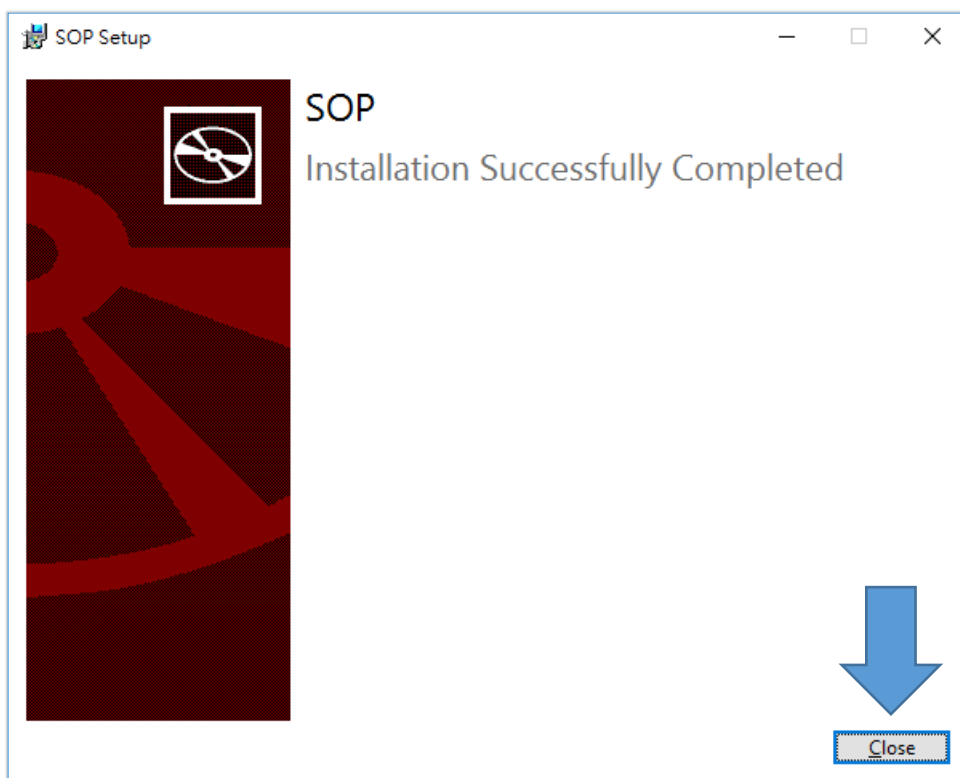
- 5. The installation process will start to install SOP onto your machine.



- 6. After the installation process is completed, click "Finish".



7. "Close" the installation wizard.



8. The shortcut of SOP will be placed at the desktop of your machine after it is successfully installed.

